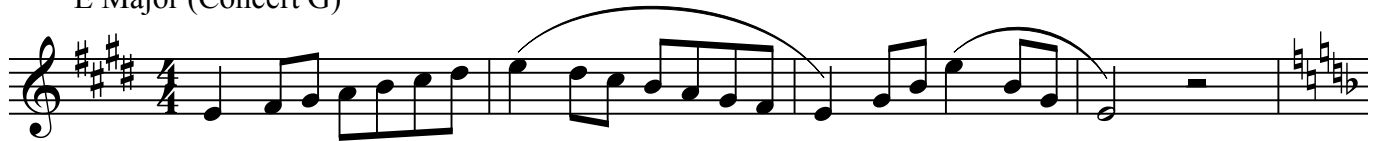


# 12 Major Scales

All State Pattern

E♭ BARITONE SAXOPHONE

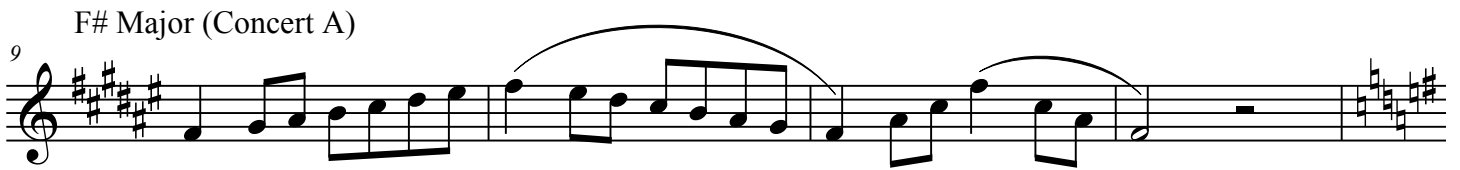
E Major (Concert G)



5 F Major (Concert A♭)



9 F# Major (Concert A)



13 G Major (Concert B♭)



17 A♭ Major (Concert B)



21 A Major (Concert C)



12 Major Scales

2  
25 Bb Major (Concert Db)

Musical notation for the Bb Major scale (Concert Db) in treble clef. The scale is written in a single line with a key signature of two flats (Bb and Eb). The notation includes a starting measure with a treble clef and a 2/5 time signature. The scale is presented in a sequence of eighth notes, with a slur over the first two measures and another slur over the next two measures. The scale concludes with a final cadence.

29 B Major (Concert D)

Musical notation for the B Major scale (Concert D) in treble clef. The scale is written in a single line with a key signature of two sharps (F# and C#). The notation includes a starting measure with a treble clef and a 2/5 time signature. The scale is presented in a sequence of eighth notes, with a slur over the first two measures and another slur over the next two measures. The scale concludes with a final cadence.

33 C Major (Concert Eb)

Musical notation for the C Major scale (Concert Eb) in treble clef. The scale is written in a single line with a key signature of one flat (Eb). The notation includes a starting measure with a treble clef and a 2/5 time signature. The scale is presented in a sequence of eighth notes, with a slur over the first two measures and another slur over the next two measures. The scale concludes with a final cadence.

37 Db Major (Concert E)

Musical notation for the Db Major scale (Concert E) in treble clef. The scale is written in a single line with a key signature of three flats (Bb, Eb, and Ab). The notation includes a starting measure with a treble clef and a 2/5 time signature. The scale is presented in a sequence of eighth notes, with a slur over the first two measures and another slur over the next two measures. The scale concludes with a final cadence.

41 D Major (Concert F)

Musical notation for the D Major scale (Concert F) in treble clef. The scale is written in a single line with a key signature of two sharps (F# and C#). The notation includes a starting measure with a treble clef and a 2/5 time signature. The scale is presented in a sequence of eighth notes, with a slur over the first two measures and another slur over the next two measures. The scale concludes with a final cadence.

45 Eb Major (Concert Gb)

Musical notation for the Eb Major scale (Concert Gb) in treble clef. The scale is written in a single line with a key signature of three flats (Bb, Eb, and Ab). The notation includes a starting measure with a treble clef and a 2/5 time signature. The scale is presented in a sequence of eighth notes, with a slur over the first two measures and another slur over the next two measures. The scale concludes with a final cadence.